



How to play

1. Using two sets of trading cards, play a "Concentration"-type game: have students match like pictures or picture to fact.
2. Have students determine galaxy classification by looking at the galaxy pictures and matching them with the icons used.
3. Have students write questions about the cards, anything they can imagine. List the questions on the board; assign research to individual students to find the answers.
4. Use the cards for a teacher-directed scavenger hunt.
5. Using a chart of the night sky, have students locate the constellations in the correct hemisphere.

You can play this game and others like it online at amazing-space.stsci.edu



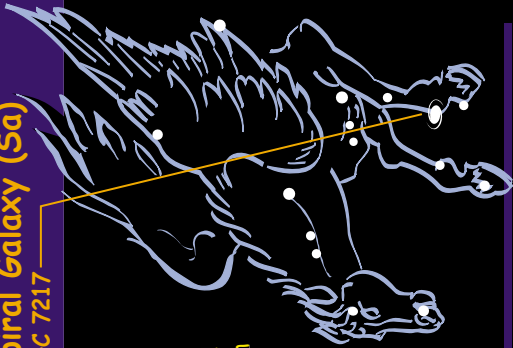
NASA • ESA • STScI [M-99-02]

Spiral Galaxy (Sa) NGC 7217



The Winged Horse

Found in the constellation Pegasus in the Northern Hemisphere.



A pinwheel-shaped galaxy containing new stars and a large amount of gas. It has a large bulge as well as tightly wrapped spiral arms.

NASA • ESA • STScI

Spiral Galaxy (Sc) NGC 4321 (M100)



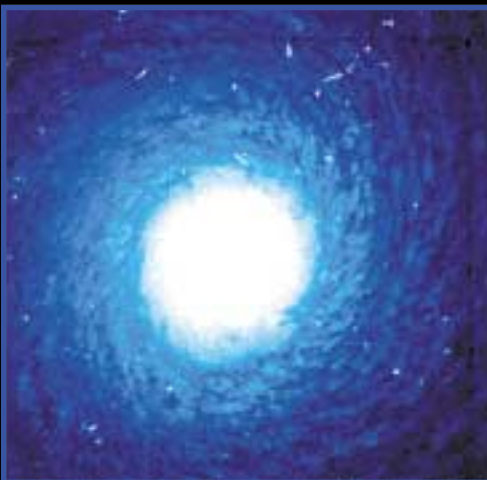
The Virgin

Found in the Virgo cluster of galaxies in the Northern Hemisphere.



A pinwheel-shaped galaxy made mainly of young stars and containing a large amount of gas. It has a small central bulge and very loose, lumpy spiral arms.

NASA • ESA • STScI





HUBBLE SPACE TELESCOPE

Barred Spiral Galaxy (SBb) NGC 4156

The Hunting Dogs

Found in the Canes Venatici constellation in the Northern Hemisphere.



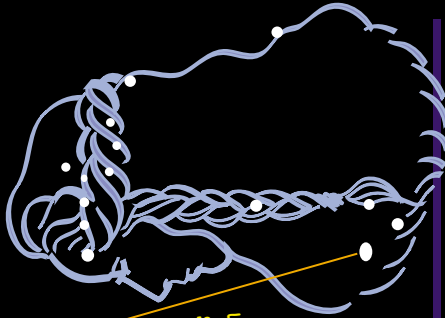
A pinwheel-shaped galaxy containing many new stars and a large amount of gas. A "bar" of stars, dust, and gas runs across its center.

NASA • ESA • STScI

Elliptical Galaxy (E1) NGC 4881

The Hair of Berenice

Found in the constellation Coma Berenices in the Northern Hemisphere.



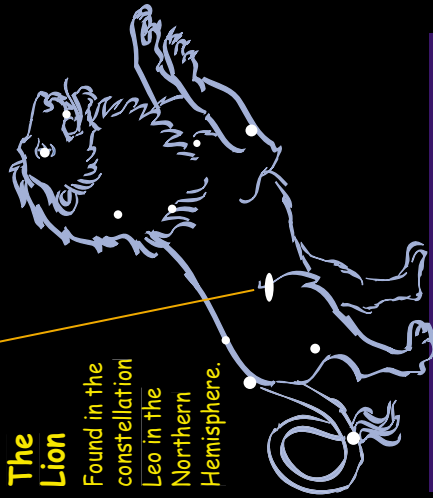
A ball-shaped galaxy made of old stars and containing a small amount of gas.

NASA • ESA • STScI

Elliptical Galaxy (E6) NGC 3377

The Lion

Found in the constellation Leo in the Northern Hemisphere.



A ball-shaped galaxy made of old stars and containing a small amount of gas.

NASA • ESA • STScI



HUBBLE SPACE TELESCOPE



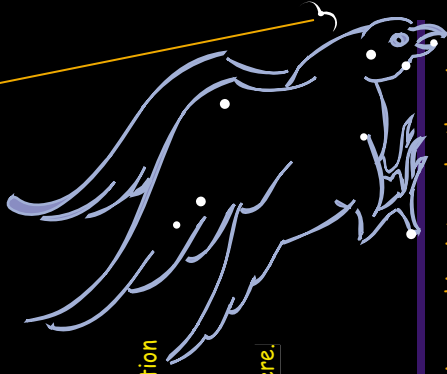
HUBBLE SPACE TELESCOPE

Colliding Galaxies

NGC 4038 and 4039

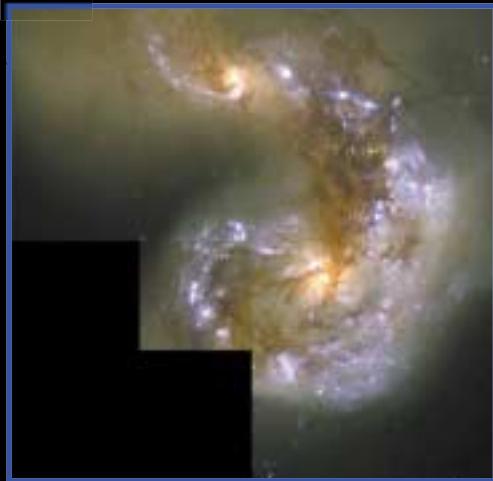
The Crow

Found in the constellation Corvus in the Southern Hemisphere.



Two galaxies crashing into each other. As many as 1,000 new star clusters formed as a result. NGC 4038 and 4039 are also called the Antennae Galaxies.

NASA • ESA • STScI



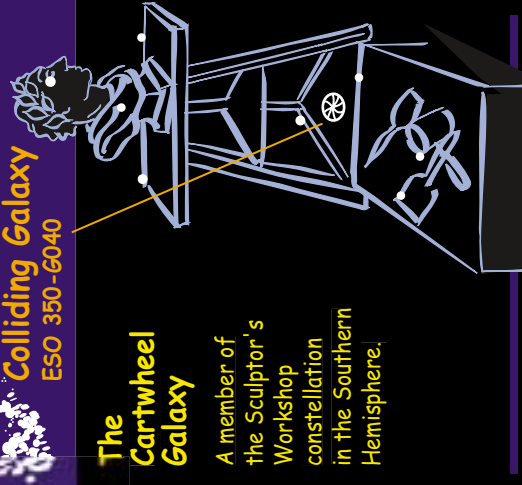
HUBBLE SPACE TELESCOPE

Colliding Galaxy

ESO 350-G040

The Cartwheel Galaxy

A member of the Sculptor's Workshop constellation in the Southern Hemisphere.



Two galaxies collided, resulting in this unique form, a wagon-wheel-shaped galaxy containing a bright bulge. An outer "ring" of young stars surrounds this bulge.

NASA • ESA • STScI



HUBBLE SPACE TELESCOPE



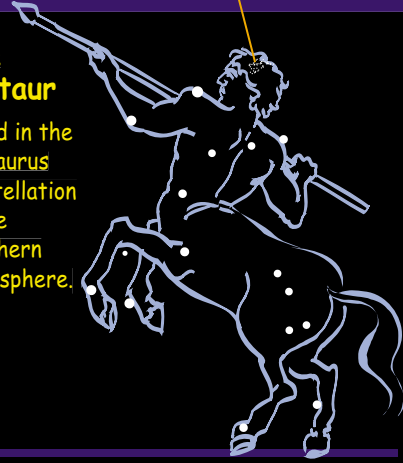
HUBBLE SPACE TELESCOPE

Irregular Galaxy (Irr)

NGC 5253

The Centaur

Found in the Centaurus constellation in the Southern Hemisphere.



An irregular galaxy with no definite structure. It is composed of both young and old stars, and it contains large amounts of gas and dust.

NASA • ESA • STScI