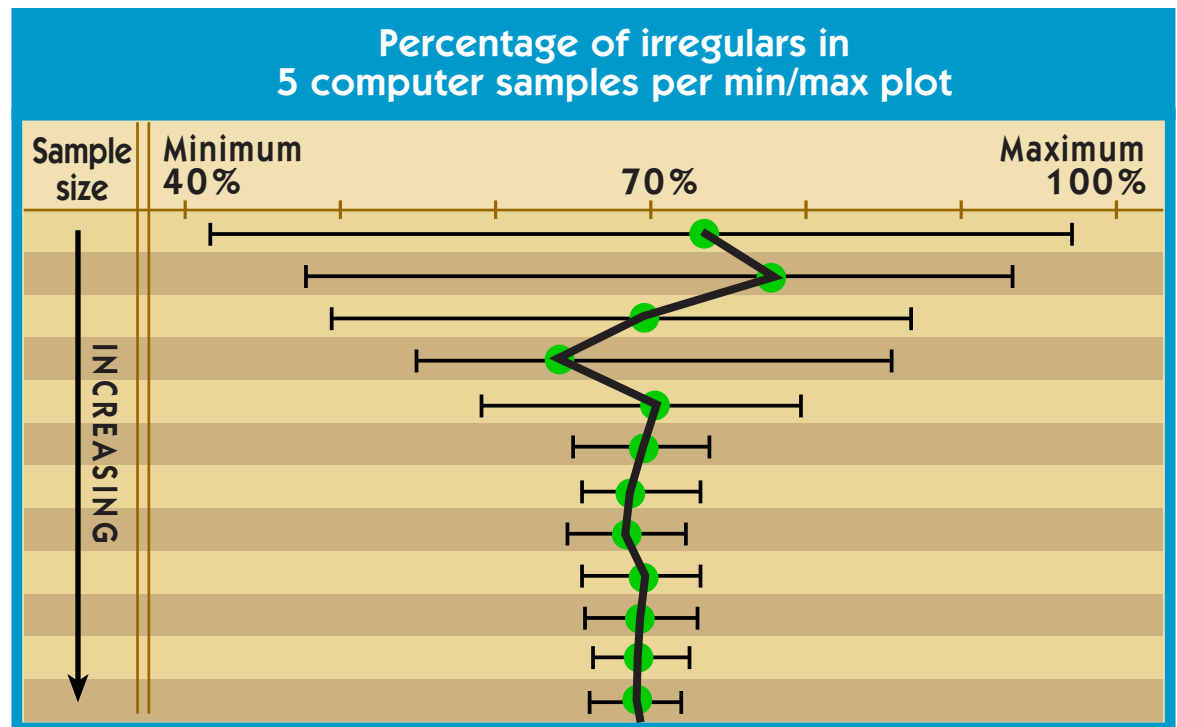


WHERE'S THE BEST SAMPLE SIZE?

Adding the mean or median helps us to see the effect of sample size on variability.

- ◆ Median
- Mean

As sample size increases, there is less variability. The measures of central tendency approach a constant value when the sample size is sufficient to represent the population. Here, the sample mean is approaching the population mean as the sample size increases.



Do you think you know where the smallest reasonable sample is?