

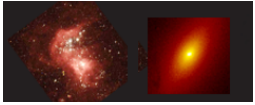
BANISHING BIAS

Click under **B** for biased or **U** for unbiased.



GALAXIES CHOSEN BY:

B **U**



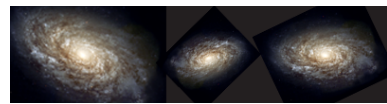
Redness

--	--



Location in picture

--	--



Size

--	--

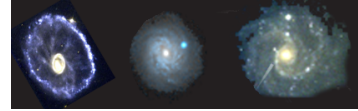


Picking with eyes closed

--	--

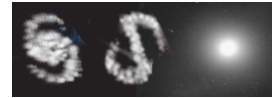
GALAXIES CHOSEN BY:

B **U**



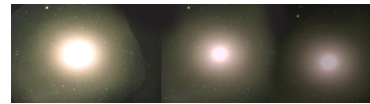
Blueness

--	--



Shape

--	--



Brightness

--	--



Letting computer generate a sample

--	--



WHY 'CHOOSING WITH EYES CLOSED' IS BIASED

Your fingertip is huge compared to the galaxy images in the HDF; it could cover or point to several galaxies at once. When you decide which galaxy your finger is on or pointing to, you are introducing the possibility for bias.

Or, you might use your mental image of the picture to try to move your finger to different locations, in an attempt to avoid introducing bias. This, too, would be biased. The very act of trying to avoid bias utilizes human intention, which introduces the potential for bias.

Which galaxy is the finger choosing?

